

The Hedgehog Club at Deer Park Wood

The session starts at 10am and finishes at 12pm

How to Find Deer Park Wood:

Deer Park Wood is between Deer Park Road and Range Road in West Witney.

Arriving by foot

There are 3 entrances – 1 from Range Road, 1 from De Havilland Way and 1 on Deer Park Road, opposite Valance Crescent.

The wood is suitable for pushchairs in the part we use.

Arriving by car

Park in De Havilland Way, OX29 0YG.

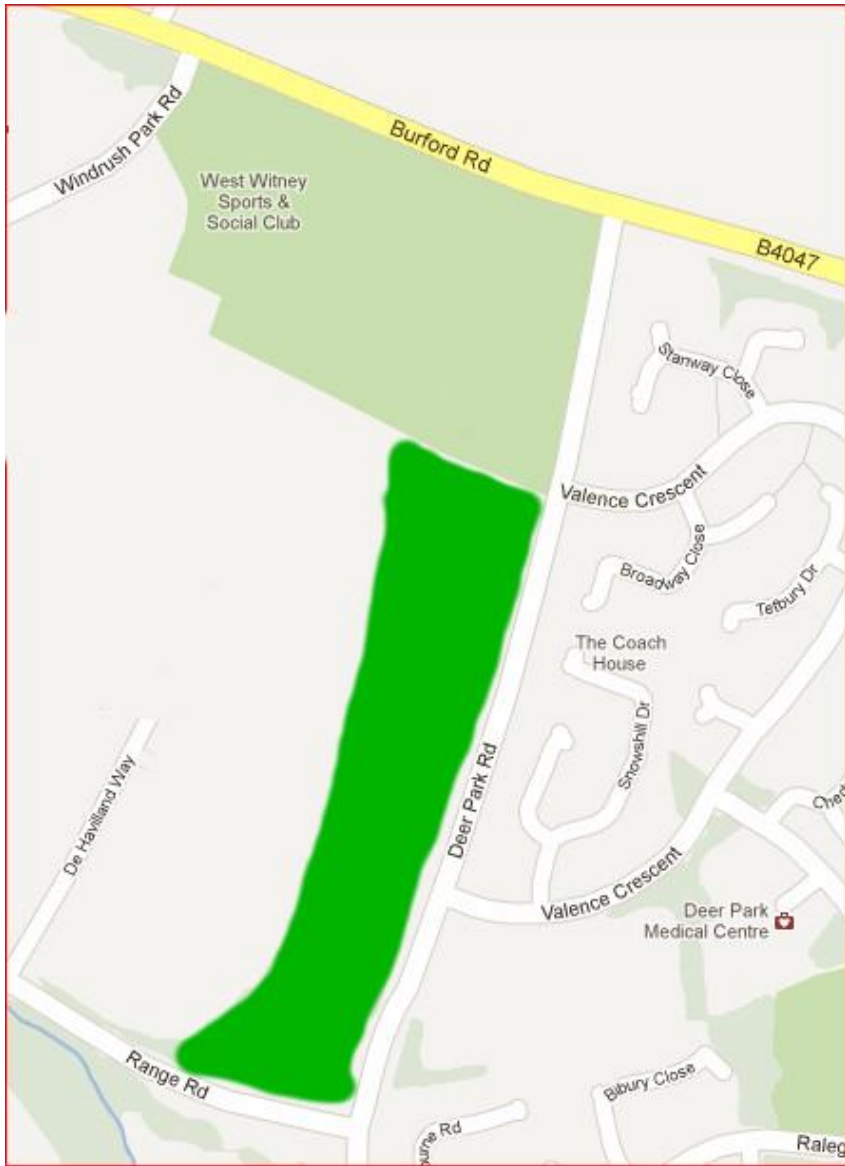
Coming from the Curbridge Roundabout follow the signs to Burford. At traffic lights turn left onto Range Road. First right is De Havilland Way.

Coming from Burford Road, turn at the traffic lights down Deer Park Road. At next traffic lights turn right into Range Road. Take the first right into De Havilland Way.

There are a number of industrial units here but we can park on the road opposite them. Park as near the top of De Havilland Way as you can. The tarmacked footpath into the woods is on the right just before the last warehouse along the metal fence. At the end of the path go up the steps and through the trees to come out in a clear area. Turn right here and walk a few metres to the Outside Classroom to find us.

If you are lost call Mandy on 07767078876 for directions.





Are there any toilets?

There are no toilets at Deer Park Wood so we can use the trees or bring a portable potty